



SPR WATER EXTRACTION PRESS
FOR THE TOUGHEST OF JOB SPR-50



SPR-50 WATER EXTRACTION PRESS FOR THE TOUGHEST OF JOB



KEY FEATURES OF THE PRESS: EFFICIENCY AND RELIABILITY

At Girbau we know how tough the work in a laundry can be. We also know that there are two key parameters in a washing system: EFFICIENCY AND RELIABILITY.

And this is especially true when it comes to the most difficult part of the process: water extraction.

This is why Girbau created the SPR-50 an efficient machine designed for hard work.

+ EFFICIENCY

Efficient pressing maximises productivity, whilst minimising consumption during the final stages of the linen processing. The SPR-50 Girbau stands out as one of the most efficient systems for extracting water from linen.



+ RELIABILITY

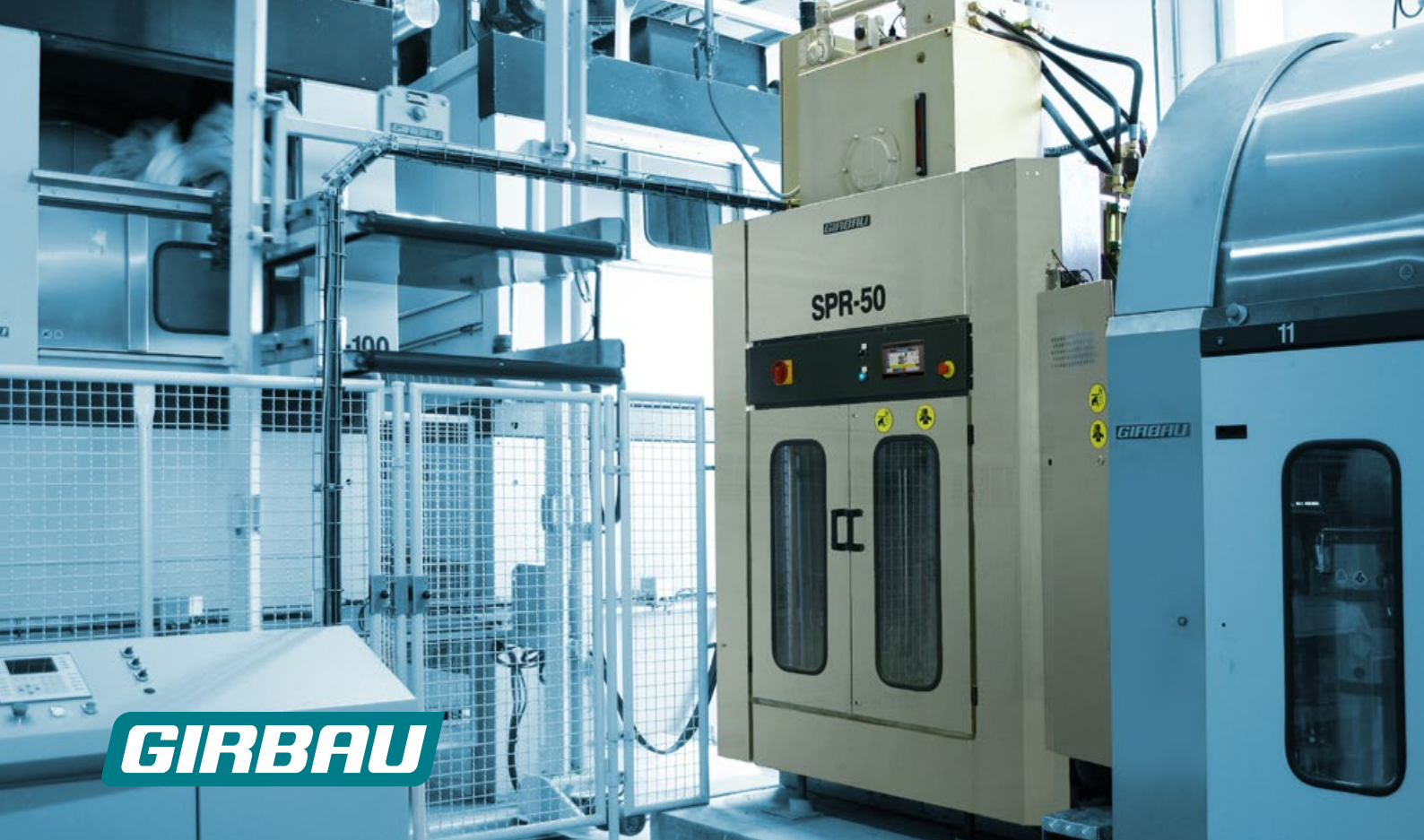
The press is a vital element in terms of reliability. Forces in excess of 300 tonnes are generated inside it. Girbau's SPR-50 has been designed to give this feature priority over all others.

VERSATILITY



The SPR-50 extractor press conditions the clothes emerging from the batch washer for their subsequent drying or ironing.

Although optimised for integrating into a Girbau washing system with a TBS-50 batch washer, it can easily be adapted to any batch washer system on the market.



PERFORMANCE

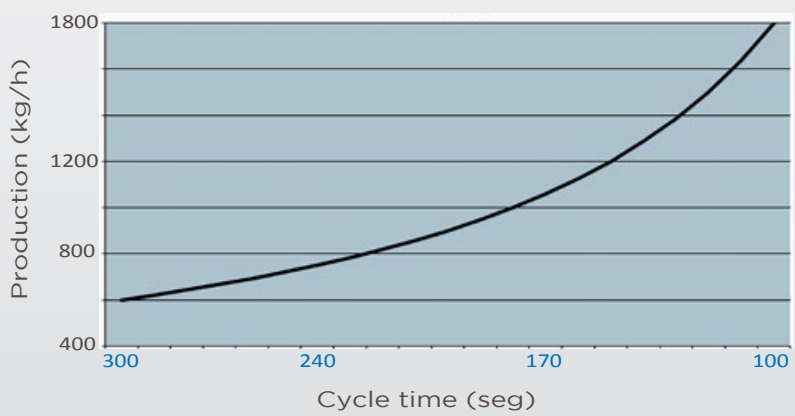
Extracting water from the linen is a key task affecting laundry's productivity. The SPR-50 is a high performance solution for extracting water and optimising the linen for subsequent drying or ironing. Optimum water extraction will minimise the energy consumption in the subsequent drying and/or ironing of the linen. Treatments ranging from the most delicate items to the maximum pressure will be achieved in the minimum time, allowing up to 1800 kg of linen to be processed per hour.



GENTLE

The SPR-50 Press is fully programmable: the pressure on the linen (regulated to an accuracy of 0.1 bar), the pressure time and even pressing times at intermediate pressures.

By programming all these parameters the user can create specific programs for the optimal treatment of special kinds of linen: Gore-Tex, consistency with elements such as buttons or zippers, special or delicate fabrics.



HIGH PERFORMANCE HYDRAULIC SYSTEM

The hydraulic system is designed to provide a press pressure that is programmable from 0 to 40 bar.

The circuit design allows for rapid movement when there is no pressure, followed by high precision when the linen is being compressed.

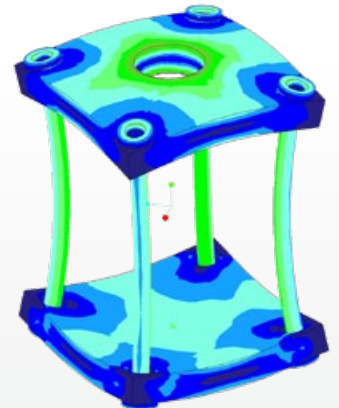
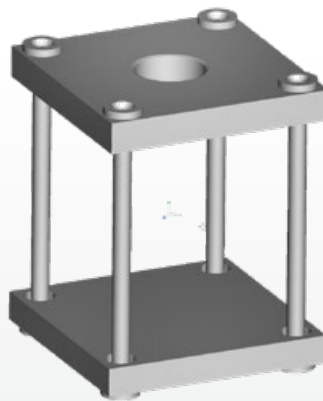


QUALITY

The SPR-50 has been designed to last. All the materials have been carefully selected to resist corrosion from both the water and chemicals in contact with them.

The mechanical fatigue of the press structure has been carefully studied in order to achieve maximum durability.

This gives SPR-50 unsurpassed **RELIABILITY**.



QUALITY COMPONENTS

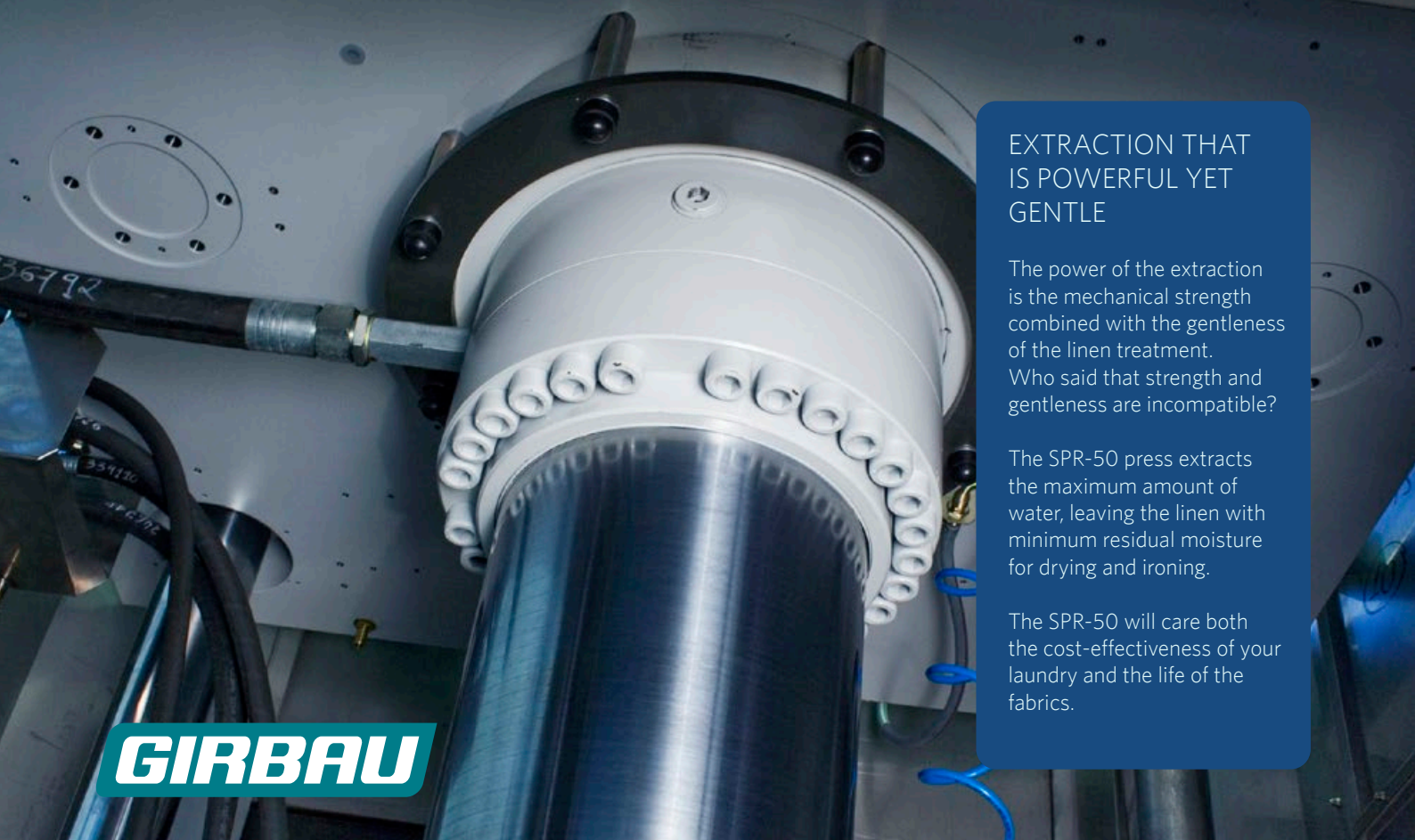


Girbau has selected each of its components to ensure the reliability of the batch washing system.

- All components in contact with water are made of materials resistant to corrosion.

- The natural rubber membrane is highly durable and resistant to high temperatures.





GIRBAU

EXTRACTION THAT IS POWERFUL YET GENTLE

The power of the extraction is the mechanical strength combined with the gentleness of the linen treatment. Who said that strength and gentleness are incompatible?

The SPR-50 press extracts the maximum amount of water, leaving the linen with minimum residual moisture for drying and ironing.

The SPR-50 will care both the cost-effectiveness of your laundry and the life of the fabrics.

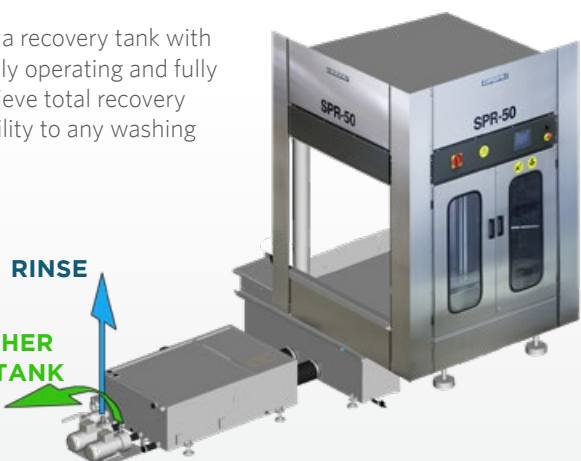


WATER RECOVERY

The SPR-50 press has a recovery tank with 2 pumps, independently operating and fully programmable, to achieve total recovery flexibility and adaptability to any washing system.

RINSE

BATCH WASHER RECOVERY TANK



HYGIENE

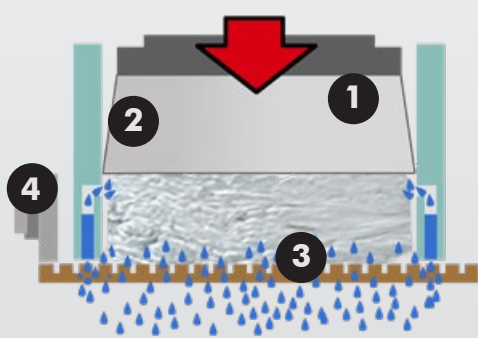
The SPR-50 press is designed for ease of access, cleaning and disinfection. The tank is positioned behind rather than under the press, and access is thus much easier in terms of hygiene and maintenance.



OPTIMISED DRAINAGE

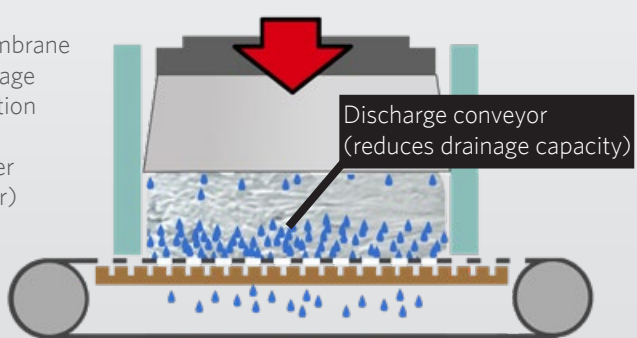
Water drainage through the plate's drainage channels, and the absence of a discharge conveyor, ensure that water is rapidly removed. In addition, drainage through the walls of the basket optimises water removal.

GIRBAU



1. High temperature membrane
2. Basket with side drainage
3. Plate with high extraction capacity
4. Pneumatic cake pusher (no discharge conveyor)

OTHER MANUFACTURERS



Discharge conveyor (reduces drainage capacity)



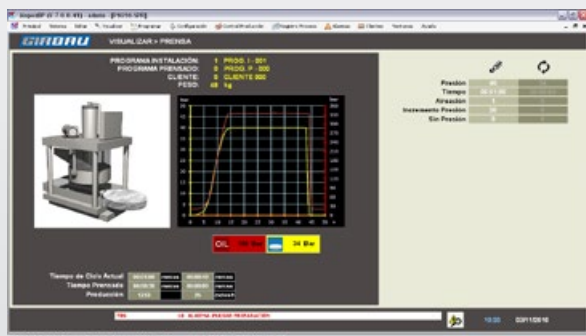
+ CONTROL

The new press control, via a colour LCD terminal and the batch washing system control PC, means that any parameter of the pressing phase can be programmed and modified intuitively.

In addition, precise pressure sensors located in the membrane and the hydraulic unit, along with a system that reveals the position of the piston at all times, allow every pressing cycle to be monitored down to the smallest detail and, if necessary, to enable faults to be very easily diagnosed.



Touch screen terminal



Screen for displaying the SPR-50 in real time in the BMT environment

TRAZABILIDAD



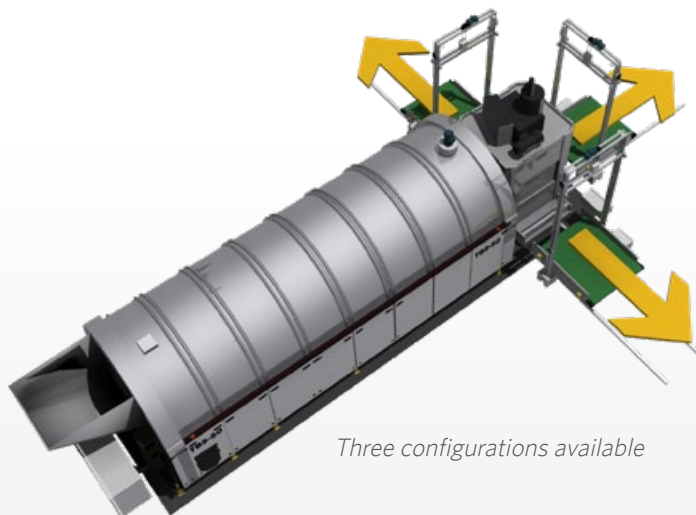
The BMT control (Batchwasher Manager Tool) is the control software that allows the washing system to be programmed. It controls all the parameters, including pressing, and stores them for later analysis or to provide any information that may be required.



VERSATILITY

Our customers can have a restricted amount of space, or different space needs throughout the life of the machine. For this reason the SPR-50 press is designed versatilely and can be assembled with different outlet positions.

This configuration is factory set but can always be easily modified without the need to purchase expensive additional components.



Three configurations available

SISTEMA DE LAVADO GIRBAU

Girbau has a full range of products for configuring the Washing System that best matches your needs. Different batch washers, depending on production needs and types of linen, and a full range of dryers together with the SPR-50 press, make up the Girbau washing system.



MODEL	SPR-50	
Nominal dry linen capacity	50 kg	110 lb
Pressing diameter	1,000 mm	39.4 in
Pressure on the linen	0... 40 Bar	0... 580 psi
Recovery pumps	2 un	2 un
Nominal flow rate	12 m ³ /h	3,170 gal/h
Water connection *	1/2" (22 l/h)	1/2" (5.8 gal/h)
Minimum cycle time	100 s	
Electrical power installed	16.5 KVA	
Nominal weight	12,600 kg	27,778 lb

* Hydraulic cooling system, water reusable in the batch washer

GIRBAU S.A. reserves the right to change specifications without notice

