

# ST Series

DRYERS



THE NEW ERA OF DRYING

**GIRBAU**

# ST Series

## Leader in efficiency

The dryers are designed to dry with maximum energy efficiency.

With a drying time of less than 11 minutes the ST2700 and 13 minutes the ST1302, and a consumption per litre of evaporated water\* of 1.06 kWh the ST2700 and 1.14 kWh the ST1302, they are a leader in efficiency and in environmentally friendly operation.

ST2700



ST2700



ST1302



ST1302  
OPL



- Productivity
- Quality
- Reliability
- Versatility
- Ergonomics



# Maximum care of the linen

## Maximum performance THE POWER OF CROSS FLOW

The exclusive **AXIAL FLOW** air flow (patented by Girbau) in the ST1302 and **TRANS FLOW** in the ST2700 ensure that 100% of the hot air passes through the linen, giving excellent performance.

These air flows ensure that the extraction vapour is emitted at low temperatures (about 80°C). The performance is far above that of a conventional dryer with built-in recoverer.

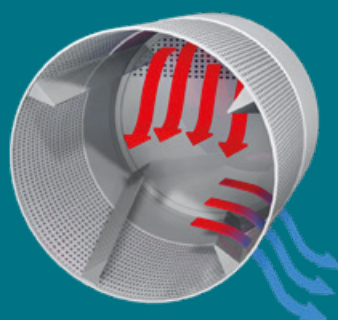
**AXIAL FLOW** and **TRANS FLOW** systems deliver much more heating power to the linen than conventional systems. We have also cut cycle time by 50%.



**AXIAL FLOW** air circulation does not need a perforated drum, meaning the temperature can be lower than in radial dryers.

In the **TRANS FLOW** system the drum is perforated to let the air out.

These factors ensure a much more gentle treatment of the linen than in traditional dryers, thereby extending its life.







## MINIMUM CONSUMPTION

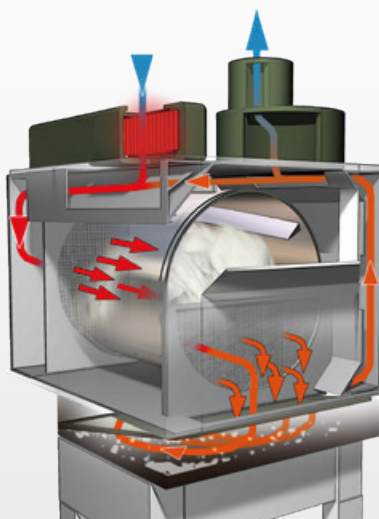
Girbau's aim has been to manufacture the most efficient and most environmentally friendly dryer with the highest drying quality.

**ECOFLOW**, the built-in air flow recirculation system, is a key to obtaining this (available in the GAS version).

In addition, the atmospheric burner modulates the delivery of heating power required, by adjusting it at all times to the needs of each drying phase cycle.



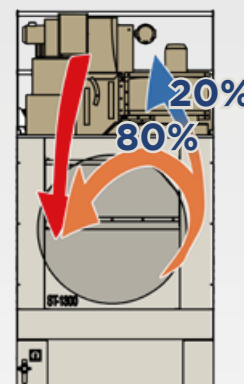
air flow with recirculation for ST2700/G



air flow with recirculation for ST1302/G



## ECOFLOW: RECIRCULATION



The recirculation system designed by Girbau ensures that the machine is **highly efficient** with **minimum power consumption**.

During the drying cycle the **ECOFLOW** system uses an adjustable port to re-circulate the flow needed to achieve optimum machine performance.

**Re-circulating** around **80%** of the **nominal flow** saves a significant amount of energy, since the air that is reused is at a high temperature.

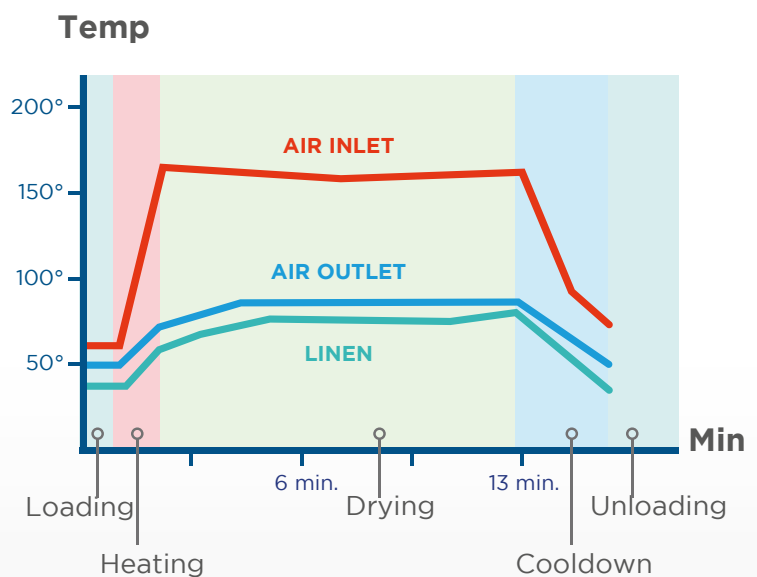


## SPEED

As well as offering maximum efficiency and minimum consumption, the **ST** dryers are able to complete a drying cycle in the shortest time possible\*. (Loading + Drying + Cool down + Unloading).

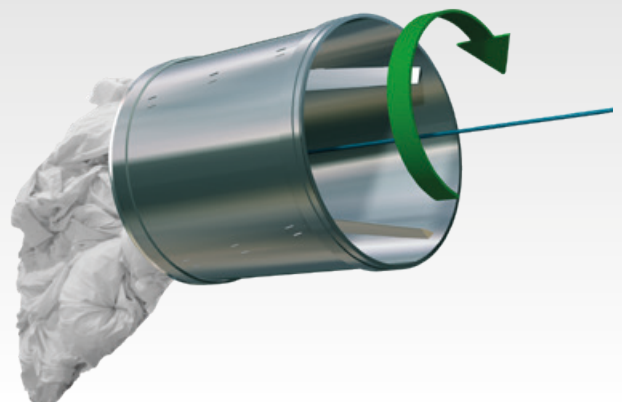
The graph shows all the phases of a drying process.

(\*) conditions according to the ISO 9398-2 standard

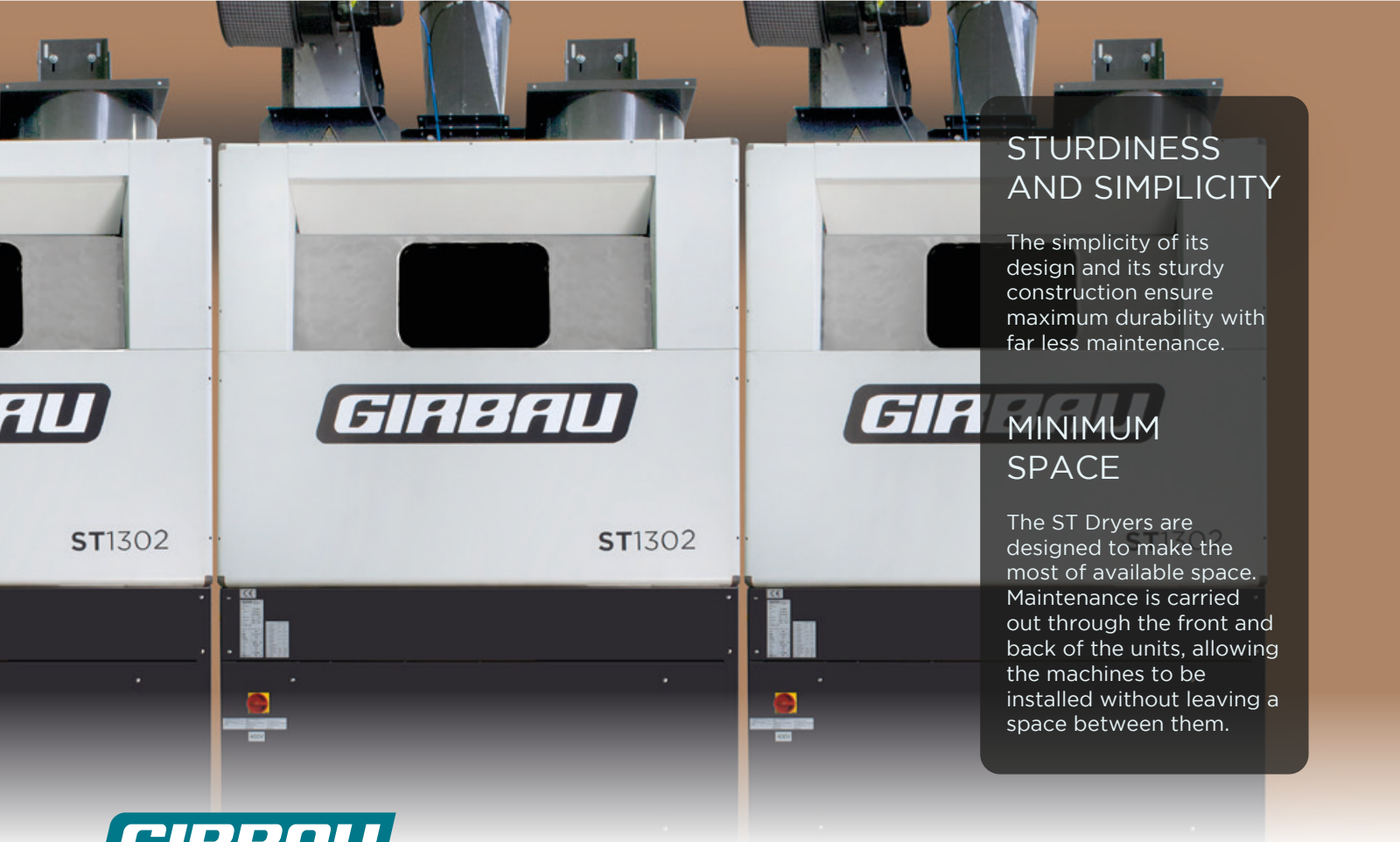


## SPIROTILT UNLOADING SYSTEM

The patented **SPIROTILT** system makes unloading very easy thanks to its tilted drum design with adjustable height helical blades. This unique system allows linen to be unloaded at the same time as cleaning the filter. It also minimises air pollution in the laundry and heat loss during unloading.







## STURDINESS AND SIMPLICITY

The simplicity of its design and its sturdy construction ensure maximum durability with far less maintenance.

## MINIMUM SPACE

The ST Dryers are designed to make the most of available space. Maintenance is carried out through the front and back of the units, allowing the machines to be installed without leaving a space between them.



## HEATING SYSTEMS

### • STEAM AND THERMAL FLUID:

The steam or thermal fluid coil ensures high performance and excellent efficiency.

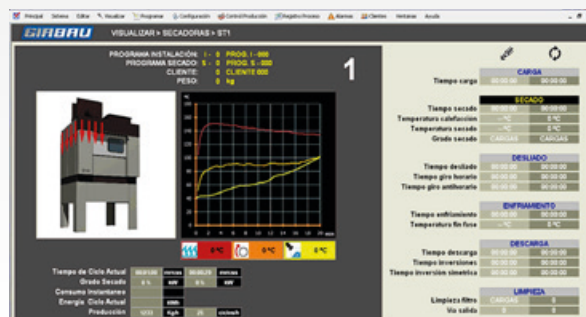
### • GAS:

Girbau's extensive experience in machines with gas heating has been applied to optimising the maximum consumption of the dryer by fitting a modulating burner.

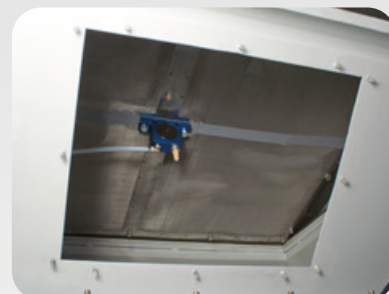
## BMT control Simple, visual & with remote assistance

The advanced BMT control software allows precise control of all the drying cycle settings. The PC controls the drying settings of all the Girbau dryers in the washing system. It has 36 programs, 7 of which are preset.

In batch washing systems, the **BMT** control features **Ghelp** to provide remote assistance and speed up technical support.



## EFFECTIVE SELF-CLEANING

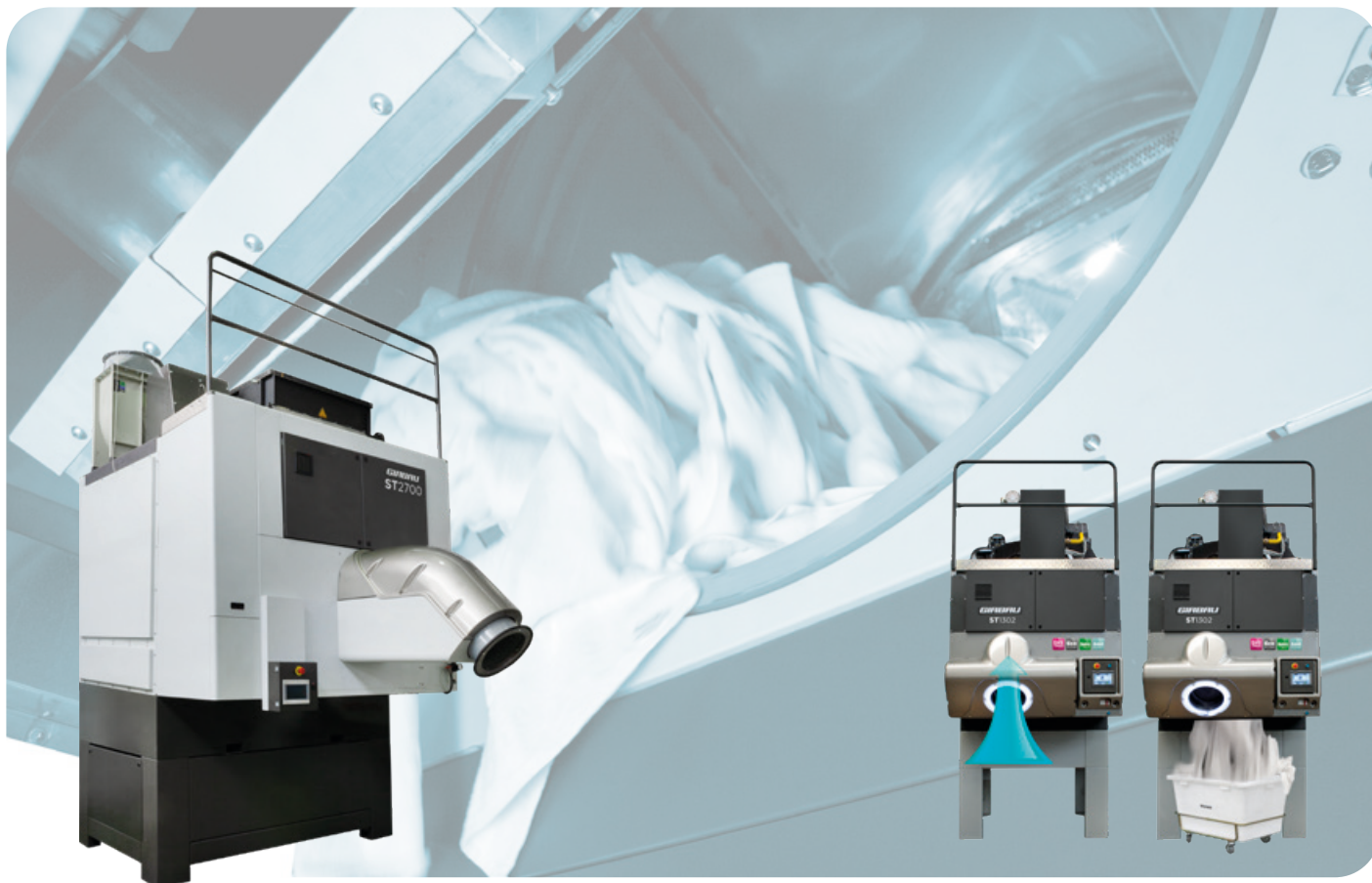


The filter self-cleaning system is designed to ensure outstanding performance of the dryer.

This function is fully automated and integrated into the drying cycle.

The operation takes place at the same time as the unloading procedure to further optimise the cycle time. In this way the dryer is in best condition at the beginning of each cycle.





## STAND-ALONE VERSION (OPL)

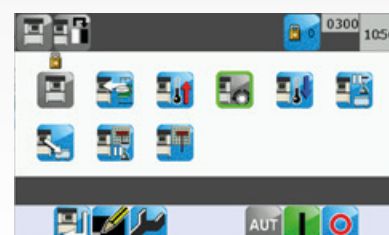
With the **SUCTION LOADING** option, the dryer provides compact, ergonomic and efficient drying that meets the drying requirements of laundries with medium to large-scale production, whether the process form a part of a batch washer or if the drying is performed by a stand-alone unit.

**SUCTION LOADING** is a loading system that allows very easy and safe loading using a powerful suction system, together with fully automatic unloading, thus making the ST ideal for maximum savings in **ENERGY**, **TIME** and **LABOUR**.

## TOUCH SCREEN

The dryers are programmed via a colour touch screen. It has **36 programs**, 7 of which are preset.

A system of graphical icons, common to all Girbau products, makes programming and running the dryer straightforward for operators.







Girbau is a multi-national corporation that has cemented its position as one of the global leading groups in the manufacture of innovative solutions for the world of laundry. The goal of Girbau is to create maximum value for its customers, supporting them in their professional growth. The Girbau community supplies simple, dependable solutions that offer its clients profitability, innovation and sustainability.

With more than 60 years of experience as a manufacturer of laundry equipment, Girbau provides the most comprehensive offering of commercial, industrial, and vended laundry solutions in the world to meet your individual productivity and efficiency needs.

We want to provide the service and community you need to make your business special. That takes commitment beyond selling machines, and we're willing to walk the extra mile. And beyond all that, we want to help you care for the environment and innovate for the next generation.

These are tall orders, but Girbau can fill them with your help. Help us take laundry beyond laundry. Get in touch today!



# Beyond Laundry

GIRBAU.COM



GIRBAU.COM

**GIRBAU**